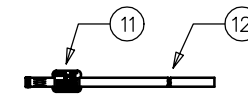
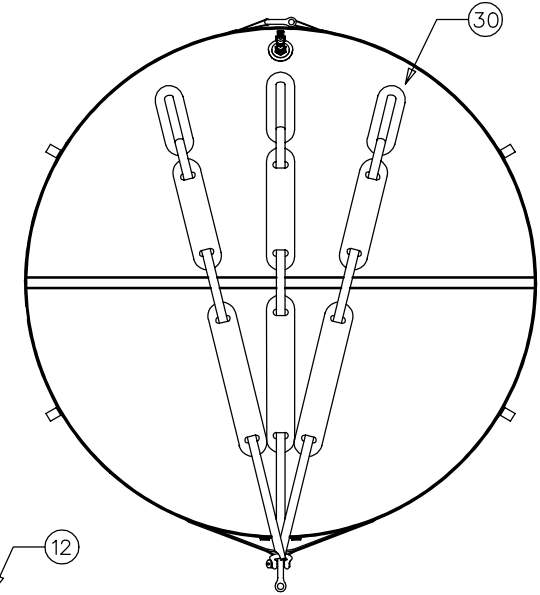
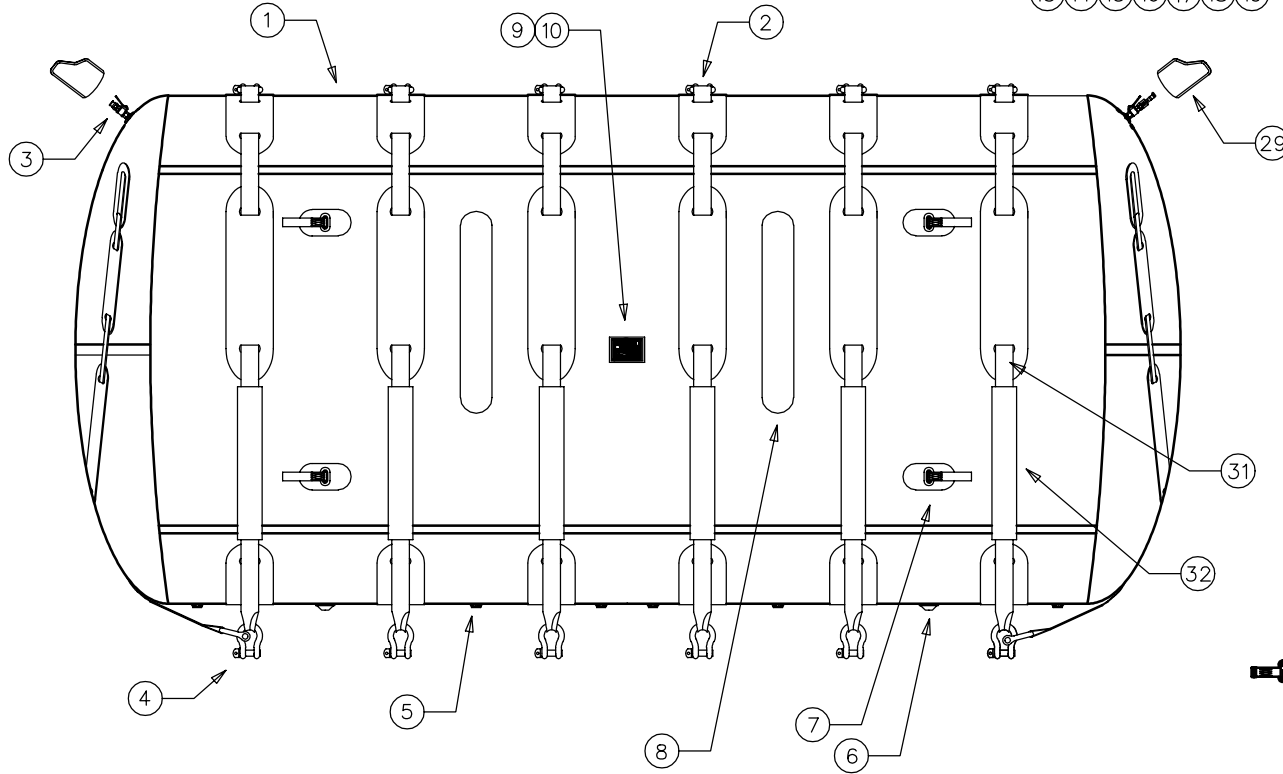
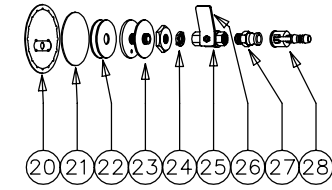
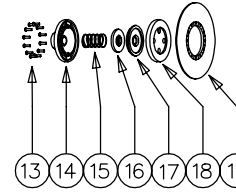
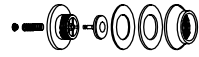
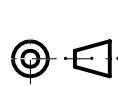


If In Doubt ASK !

Exploded ISO View Of A10 Valve

Exploded ISO View Of A3 Relief Valve

Exploded ISO View Of Inlet Valve



Overall Length	6000mm
Overall Diameter	2900mm
Overall Height	3100mm
Lift Capacity	35000Kg

Item No	Part No	Qty	Description	Remarks	Item No	Part No	Qty	Description	Remarks
1	D0108039999	N/A	P.V.C Material	3 x 3 Yellow	17	D0407643500	2	Internal Diaphragm	
2	D0601510300	8	6.5 Tonne Shackle		18	D0407683300	2	Anchor Plate	
3	N/A	2	Ball Valve Assembly	See Items 20 - 28	19	D0407598600	2	Weldable Flange	
4	D0601510500	6	12 Tonne Shackle		20	E0108039000	2	Internal Valve Cover	
5	D0407683320	12	A10 Relief Valve	See ISO View For Detail	21	E0108031600	2	3/4 Inlet Patch	
6	N/A	2	A3 Relief Valve	See Items 13 - 19	22	E0413633000	2	3/4 Inlet Gasket	
7	E0108031500	8	Major Anchor Tab		23	D0413560000	2	3/4 Brass Inlet	3/4 BSP Thread
8	E0108032700	4	Strap Panel Type 2	Screen Print, No Holes	24	D0413562900	2	3/4 Brass Nut	3/4 BSP Thread
9	E0102030816	1	JW Label	Blue PVC	25	D0440561310	2	3/4 Ball Valve	3/4 BSP Thread
10	E0160175800	1	Label Cover	Clear PVC	26	D0440531311	2	Stainless Steel Handle	
11	E0102036010	1	Tie Strap Label		27	D0416551230	2	3/4 Brass Male Coupling	3/4 BSP Thread
12	E0202708800	1	Major XLarge Tie Strap		28	D0416551240	1	Brass Hose Tail	
13	D0407563700	2	Screw Set		29	E0108038800	2	External Valve Cover	
14	D0407683100	2	Black Housing		30	E0211709703	6	Restaint Strap	50mm Webbing
15	D0407523900	2	2 PSI Spring		31	E0211709704	6	T35 Side Strap	100mm Duplex Webbing
16	D0407683200	2	Pressure Plate		32	N/A	12	Side Strap Cover	3 x 3 Yellow PVC

Dimensions In MM		File Name	
Tolerance		T35.DGN	
N/A		Material	
		See Parts Box	
<small>© SCHOLLE EUROPE LIMITED t/a Crestbury and J.W. Automarine 1972-2003 .This article and drawing is protected by copyright and is the property of Scholle Europe Limited.it may not be copied, published, or used for any purpose other than that for which it has been supplied, except with the written permission of Scholle Europe Limited.</small>			
<small>Enterprise Way Fakenham, Norfolk, NR21 8SN, England Telephone: Fakenham (01328) 852300 Fakenham (01328) 854222 sales@jwautomarine.co.uk</small>			
Drawn	Sig	Revisions	Issue Date
SBG	JR	Hand Drawn	1 27.6.83
		Drawn To CAD	2 25.5.01
Scale		New Side Straps	3 12.6.01
1:17		Pt. No. Change	4 11.7.01
On A1		Valve Positions	5 4.12.02
Checked			
Client		Drawing No	Issue No
J.W. Automarine		CJW 83/31	5
Sheet No		Date	
1 Of 1		4.12.02	
Title			
T35 35000Kg			