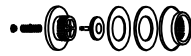
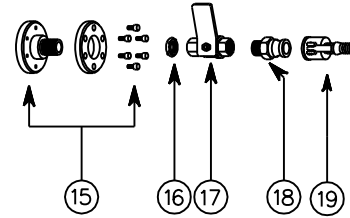


If In Doubt ASK !

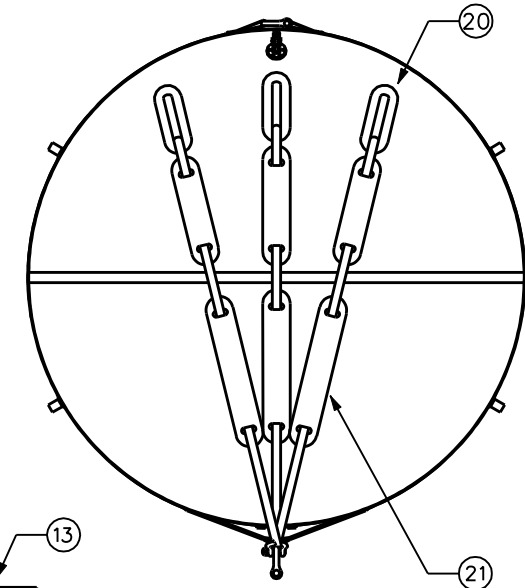
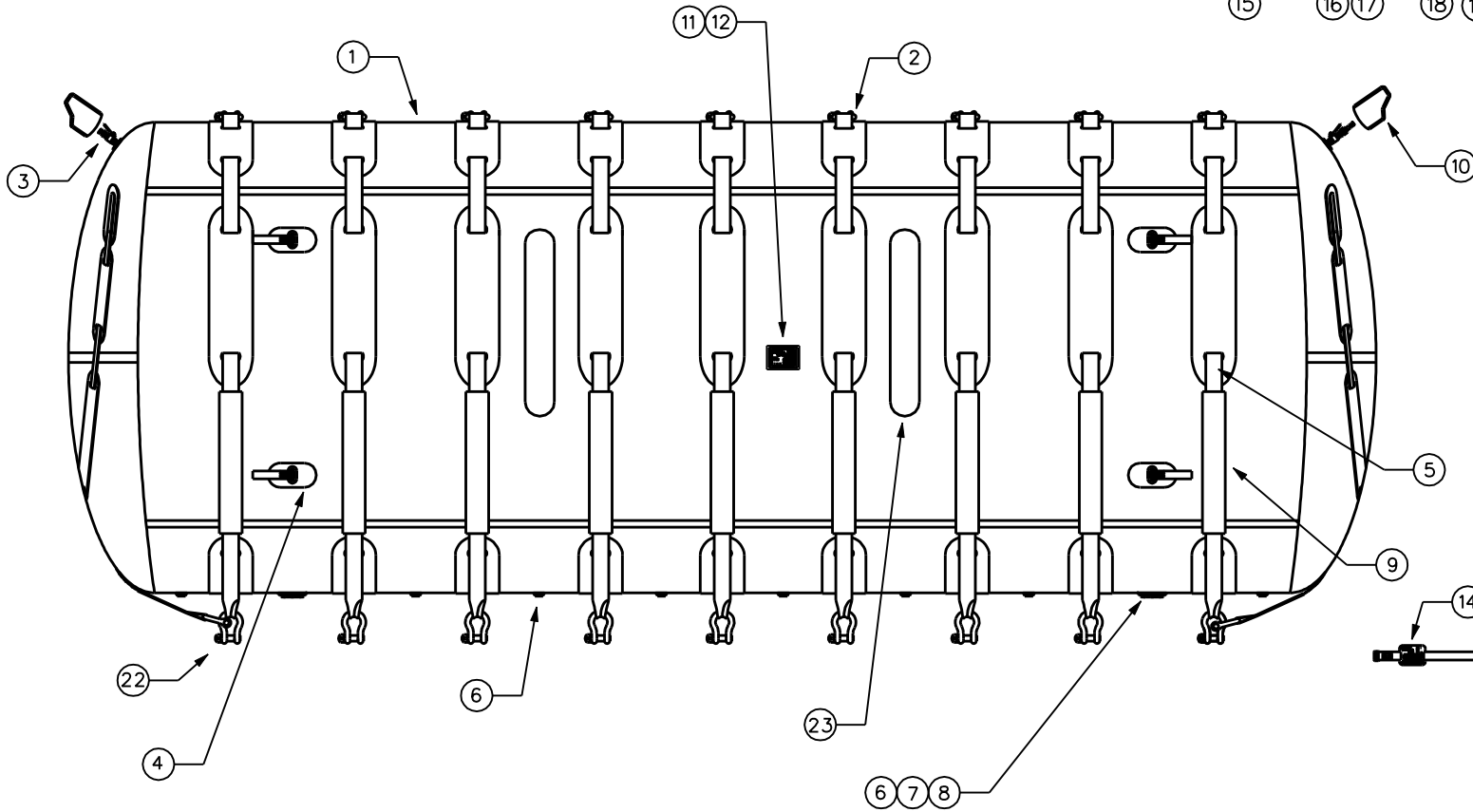
Exploded ISO View Of A10 Valve



Exploded ISO View Of Inlet Valve



Overall Length	8000mm
Overall Diameter	2900mm
Overall Height	3100mm
Lift Capacity	50000Kg



Item No	Part No	Qty	Description	Remarks	Item No	Part No	Qty	Description	Remarks
1	D0108039999	N/A	3 x 3 Yellow P.V.C. Material		13	E0202708800	1	Major X Large Tie Strap	
2	D0601510300	11	6.5 Ton Shackle		14	E0102036010	1	Tie Strap Label	Blue PVC
3	N/A	2	Ball Valve Assembly	See Items 15 - 19	15	D0412560160	2	3/4" Skin Fitting Male	3/4" BSP Thread
4	E0108031500	8	Major Anchor Tab		16	D0413562900	2	3/4" Brass Nut	3/4" BSP Thread
5	E0211709704	9	T35 Side Strap	100mm Duplex Webbing	17	D0440561316	2	St/Stl Ball Valve	3/4" BSP Thread
6	D0407683320	18	A10 Relief Valve	See ISO View For Detail	18	D0416551230	2	3/4" Brass Male Coupling	3/4" BSP Thread
7	D0430690018	2	4" Skin Fitting	Female	19	D0416551240	1	Brass Hose Tail	
8	D0430690021	2	4" Plug	To Take A10 Valve	20	E0211709703	6	Restraint Strap	
9	N/A	18	Large Sleeve		21	N/A	6	Strap Panel	
10	E0108038800	2	External Valve Cover		22	D0601510500	9	12 Tonne Shackle	
11	E0102030816	1	JW Label	Blue PVC	23	E0108032700	4	Strap Panel Type 2	Screen Print, No Holes
12	E0160175800	1	Label Cover	Clear PVC					

Dimensions in MM		T50.DGN	
Tolerance		Material	
N/A		See Parts Box	
© SCHOLLE EUROPE LIMITED t/a Crestbury and J.W. Automarine 1972-2006. This article and drawing is protected by copyright and is the property of Scholle Europe Limited. It may not be copied, published, or used for any purpose other than that for which it has been supplied, except with the written permission of Scholle Europe Limited.			
Drawn Sig Scale On A1 Checked		Revisions Issue Date 1 16.9.04 2 11.5.05 3 24.10.06 4 9.8.06	
Drawing No Sheet No		Client J.W. Automarine Drawing No Issue No Sheet No Date	
CJW 04/088		4	
1 of 1		9.6.06	
Title			
T50 50000Kg			



Enter: Tea Way
 Fakenham, Norfolk, NR21 8SN, England
 Telephone: Fakenham 01328 853230
 Fax: Fakenham 01328 854222
 Email: sales@jwautomarine.co.uk