



MARINE VISION

Distributors of Professional Underwater Technologies



MVL-2

MARINE VISION MVL-2 SUBSEA LASER POINTER SYSTEM

MVL-2 is a field proven underwater laser pointer system for use on any underwater camera system.

Easy installation on any roV, auV or submersible systems.

Rugged and adaptable construction with included PC SW for measuring and post processing.

MVL-2

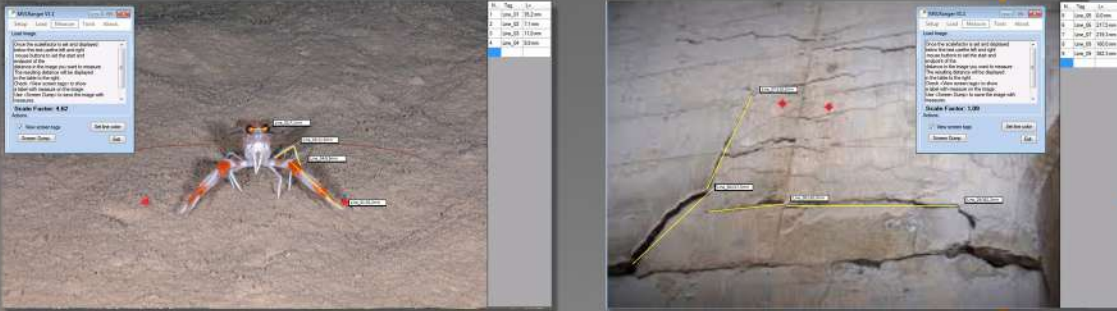
Marine Vision MVL-2 Subsea laser pointer system

The MVL-2 system consists of two laser modules mounted on a HD Delrin yoke that can be adapted to any camera or installation.



Ref. MVL-2

Supplied with MVL Ranger PC software that allows measuring in captured images



Indicated for measuring cracks in concrete structures and for biological studies.



MVL-2 instalado en un vehículo SAAB SEA EYE mod. FALCON

Easy to install on any rov/camera.



Rugged HD Delrin yoke with individual alignment screws.

Special sapphire front lens with minimum reflectance.

Specifications:

Max depth: 2000msw (3000msw optional).
Laser wavelength: 635nm (red).
Output power: 15mW per pointer (laser class 3B).
Supply power: 7-30VDC.
Connector: SubConn MCBH3M. (other brands on request).
Weight in water: 200g.

- Separate remote RS232 On/Off system with control SW optional.

34 mm



134 mm



151 mm