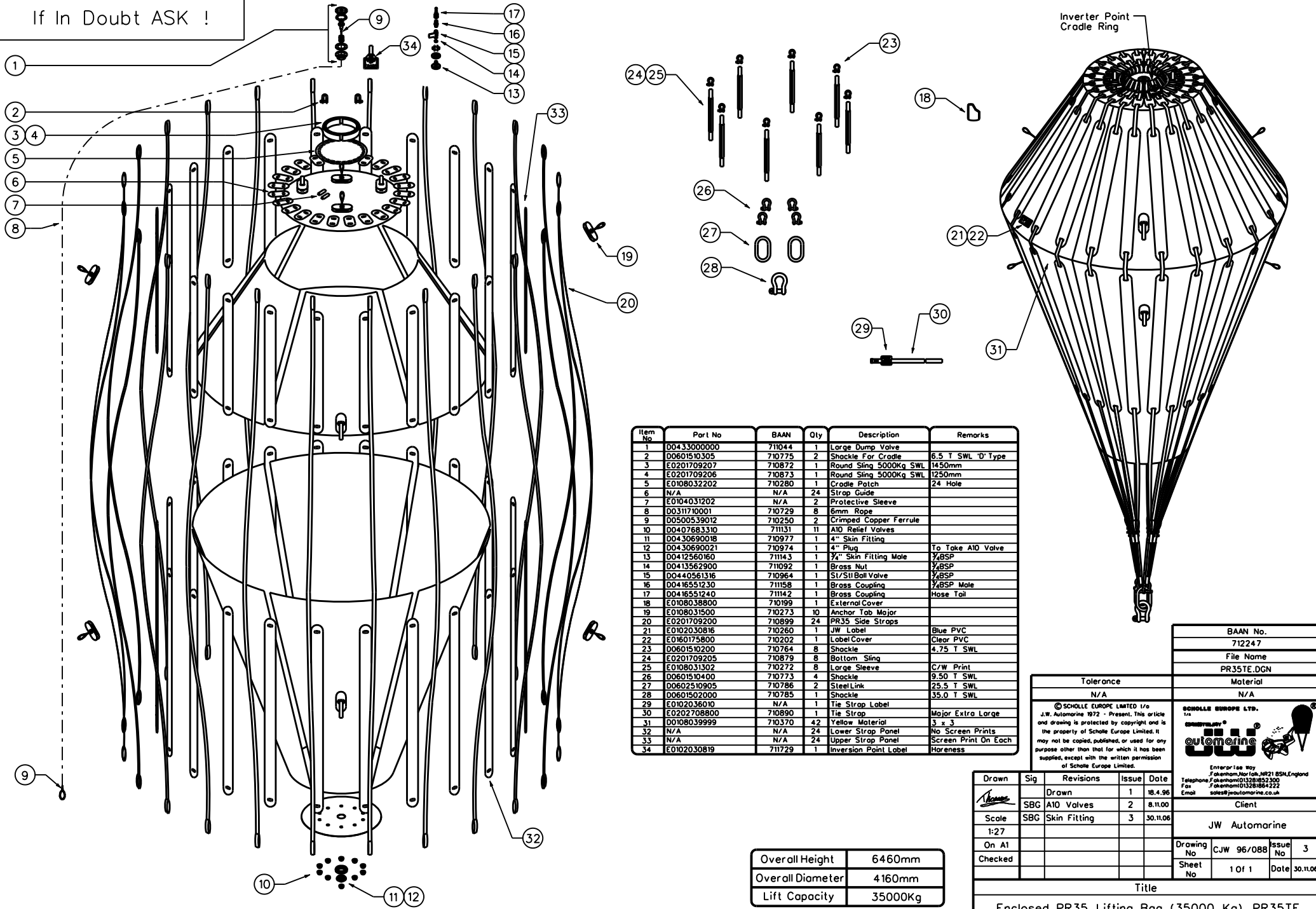


If In Doubt ASK !



Item No	Part No	BAAN	Qty	Description	Remarks
1	00433000000	71044	1	Large Dump Valve	
2	00601510305	710775	2	Shackle For Cradle	6.5 T SWL 'D' Type
3	E0201709207	710872	1	Round Sling 5000Kg SWL	1450mm
4	E0201709206	710873	1	Round Sling 5000Kg SWL	1250mm
5	E0108032202	710280	1	Cradle Patch	24 Hole
6	N/A	N/A	24	Strap Guide	
7	E0104031202	N/A	2	Protective Sleeve	
8	D0311710001	710729	8	6mm Rope	
9	D0500539012	710250	2	Crimped Copper Ferrule	
10	00407683310	711131	11	A10 Relief Valves	
11	00430690018	710977	1	4" Skin Fitting	
12	D0430690021	710974	1	4" Plug	To Take A10 Valve
13	D0412560160	711143	1	3/4" Skin Fitting Male	3/4BSP
14	D0413562900	711092	1	Brass Nut	3/4BSP
15	D0440561316	710964	1	SI/ST/Ball Valve	3/4BSP
16	D0416551230	711158	1	Brass Coupling	3/4BSP Male
17	D0416551240	711142	1	Brass Coupling	Hose Tail
18	E0108038800	710199	1	External Cover	
19	E0108031500	710273	10	Anchor Tab Major	
20	E0201709200	710899	24	PR35 Side Straps	
21	E0102030816	710260	1	JW Label	Blue PVC
22	E0160175800	710202	1	Label Cover	Clear PVC
23	D0601510200	710764	8	Shackle	4.75 T SWL
24	E0201709205	710879	8	Bottom Sling	
25	E0108031302	710272	8	Large Sleeve	C/W Print
26	D0601510400	710773	4	Shackle	9.50 T SWL
27	D0602510905	710786	2	Steel Link	25.5 T SWL
28	D0601502000	710785	1	Shackle	35.0 T SWL
29	E0102036010	N/A	1	Tie Strap Label	
30	E0202708800	710890	1	Tie Strap	Major Extra Large
31	D0108039999	710370	42	Yellow Material	3 x 3
32	N/A	N/A	24	Lower Strap Panel	No Screen Prints
33	N/A	N/A	24	Upper Strap Panel	Screen Print On Each
34	E0102030819	711729	1	Inversion Point Label	Horeness

BAAN No.	712247
File Name	PR35TE.DGN

Tolerance	Material
N/A	N/A

© SCHOLLE EUROPE LIMITED 1/0
 J.W. Automarine 1972 - Present. This article and drawing is protected by copyright and is the property of Scholle Europe Limited. It may not be copied, published, or used for any purpose other than that for which it has been supplied, except with the written permission of Scholle Europe Limited.

SCHOLLE EUROPE LTD.
 1/0
automarine
 Enteror Lee Way
 Fakenham, Norf, NR21 8SM, England
 Telephone: Fakenham 01283 852300
 Fax: Fakenham 01283 854222
 Email: sales@jwautomarine.co.uk

Drawn	Sig	Revisions	Issue	Date
AS		1	18	4.96
Scale	SBC	A10 Valves	2	8.11.00
1:27	SBC	Skin Fitting	3	30.11.06
On A1				
Checked				

Drawing No	CJW 96/088	Issue No	3
Sheet No	1 Of 1	Date	30.11.06

Overall Height	6460mm
Overall Diameter	4160mm
Lift Capacity	35000kg

Enclosed PR35 Lifting Bag (35000 Kg) PR35TE