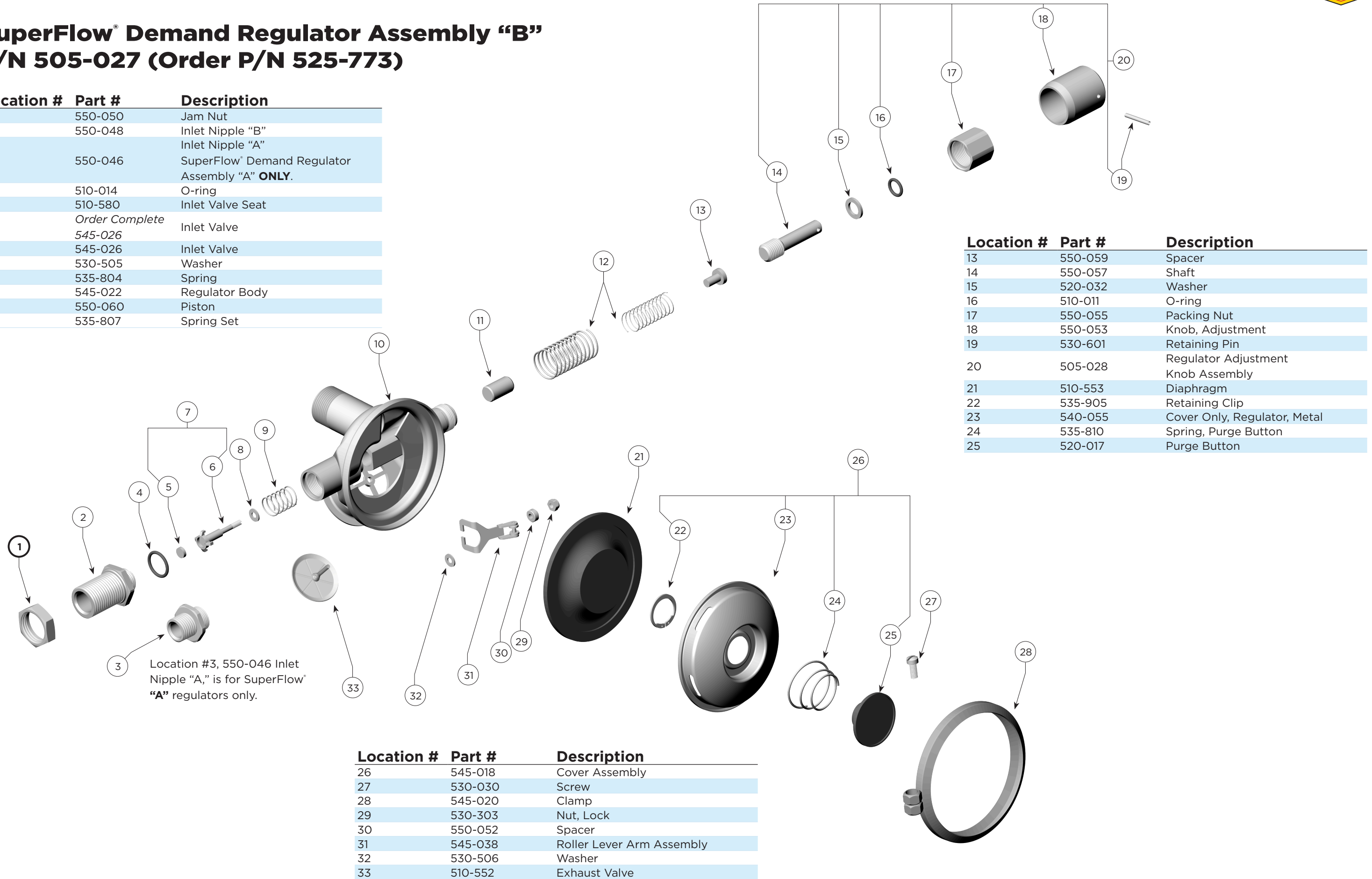


# SuperFlow® Demand Regulator Assembly “B”

## P/N 505-027 (Order P/N 525-773)

Location #	Part #	Description
1	550-050	Jam Nut
2	550-048	Inlet Nipple “B”
3	550-046	SuperFlow® Demand Regulator Assembly “A” <b>ONLY</b> .
4	510-014	O-ring
5	510-580	Inlet Valve Seat
6	<i>Order Complete</i> 545-026	Inlet Valve
7	545-026	Inlet Valve
8	530-505	Washer
9	535-804	Spring
10	545-022	Regulator Body
11	550-060	Piston
12	535-807	Spring Set



Location #	Part #	Description
13	550-059	Spacer
14	550-057	Shaft
15	520-032	Washer
16	510-011	O-ring
17	550-055	Packing Nut
18	550-053	Knob, Adjustment
19	530-601	Retaining Pin
20	505-028	Regulator Adjustment Knob Assembly
21	510-553	Diaphragm
22	535-905	Retaining Clip
23	540-055	Cover Only, Regulator, Metal
24	535-810	Spring, Purge Button
25	520-017	Purge Button

Location #3, 550-046 Inlet Nipple “A,” is for SuperFlow® “A” regulators only.

Location #	Part #	Description
26	545-018	Cover Assembly
27	530-030	Screw
28	545-020	Clamp
29	530-303	Nut, Lock
30	550-052	Spacer
31	545-038	Roller Lever Arm Assembly
32	530-506	Washer
33	510-552	Exhaust Valve