

# CORE DRILL

## AK 46 S - AK 46 G

AK 46 S - core drill for holes  $\varnothing$  30 - 100 mm - AK 46 G - core drill for holes  $\varnothing$  80 - 160 mm

*Irreplaceable in underwater works!*



Available in  
underwater version



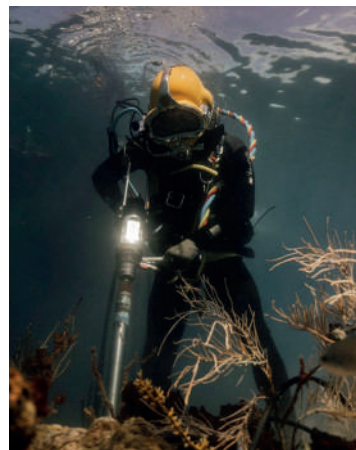
- Safety valve that automatically cuts rotation in case of block of the core beat.
- ON/OFF trigger with "lock on" button for use of the tool on drill rigs
- Equipped with level gauge to show vertical/horizontal linearity of holes
- Construction in Ergal and stainless steel to guarantee lightness and durability
- Exclusive adjustable back handle allows feed pressure on the tool pushing with chest or knee
- Long side handle to allow secure rotation contrast

**AK46** is a hydraulic core drill designed for manual use or for use with drill rigs. The tool is available in two configurations:

• **AK46 S** for holes from  $\varnothing$  30 a 100 mm • **AK46 G** for holes from  $\varnothing$  80 a 160 mm.

The hydraulic functioning and the superior technical characteristics assure a series of advantages not obtainable from traditional electric core drill tools: - Impossibility to cause electric shocks, can work even in complete water immersion - Absence of vibration and noise - Unbeatable ratio weight/power/dimension - Long operative life and minimal maintenance needs - Hydraulic motor cannot be damaged even in case of prolonged block of rotation or overload (*condition that will damage electric tools*) **AK46** is in many conditions the unique alternative to traditional electric tools, it is ideal in the maintenance of gas, water, sewers networks, irreplaceable when is needed to creates a pipe passage through walls of historical buildings that cannot undergo to vibrations or in the use inside trenches with high water pres. *Irreplaceable in underwater works!*

TECHNICAL CHARACTERISTICS	AK 46 S	AK 46 G
Weight (kg)	8 (without back handle)	8 (without back handle)
Dimension LxPxH (cm)	40x9x32	40x9x32
Cut capacity (mm)	30-100	80-160
Flow L/min min-max	20-30	20-30
N° speed@20 L/min	600	400
N° speed@30 L/min	1500	1000
Pressure Bar min-max	140-180	140-180
Distance crown flush with the wall (mm)	45	45
Attachment of core bit	External 1-1 / 4 "BSP Male Internal 1/2 "BSP Female	External 1-1 / 4 "BSP Male Internal 1/2 "BSP Female



AK46 installed on drill rig

