

DIAMOND CHAIN SAW

HDS 5 - HDS 6

Hydraulic pressure 175 Bar



- Deep cutting capacity
- Side handle rubbered for high comfort
- High speed hydraulic motor
- Chain cooling water tap
- Quick water coupler
- Quick tension system to adjust chain tension (Patented)
- Full body in allyminium
- Bubble level
- Flush cut



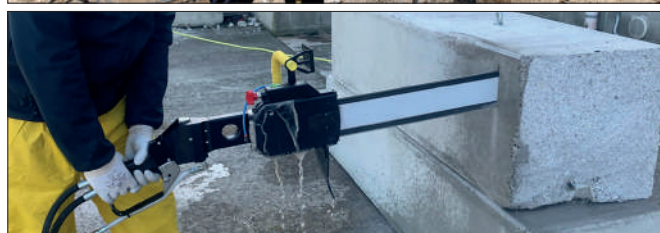
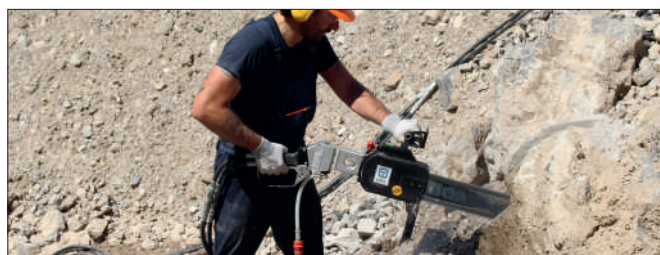
Available in underwater version



Engine detail of our production, capable of running up to 7000 rpm continuously
QUICK TENSION system for fast chain pulling

The diamond chain saw is suitable for precise cuts with edges or in flush cutting mode in concrete and building materials. It is also suitable for cutting cast iron or iron pipes. The innovative patented system, Quick Tension, allows smooth and fast management of the chain tension without disassembling the side casing and facilitating the operator in awkward situations or in underwater applications.

TECHNICAL CHARACTERISTICS	HDS 5	HDS 6
Weight (kg)	13kg with bar & chain 40cm	15kg with bar & chain 40cm
Dimension LxH (cm)	62x30	85x30
Width (cm)	24	24
Ideal flow L/min	30	45
Flash Cut	yes	yes
Hydraulic pressure Bar	175	175
Operator speed	6000 rpm free of load	7000 rpm free of load



DOA
Hydraulic Tools

22066 Mariano Comense (CO) - ITALY - Via Sant'Agostino 158
Tel. (+39) 031 792 040 - www.doa-srl.com - info@doa.it