

SubConn® handling instructions

Follow these instructions carefully to ensure correct use of your SubConn® connectors.

Handling

- Always apply grease before mating (see next page)
- Disconnect by pulling straight, not at an angle
- Do not pull on the cable and avoid sharp bends at cable entry
- When using a bulkhead connector, ensure that there are no angular loads
- Do not over-tighten the bulkhead nuts
- SubConn® connectors should not be exposed to extended periods of heat or direct sunlight. If a connector becomes very dry, it should be soaked in fresh water before use

Untagged cable and pigtail colour coding

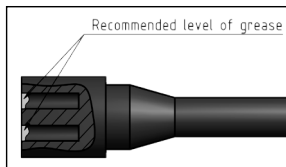
2 - 25 pin connectors (excluding 3 pin connectors):

1 Black	7 White / Black	13 Red / White
2 White	8 Red / Black	14 Green / White
3 Red	9 Green / Black	15 Blue / White
4 Green	10 Orange / Black	16 Black / Red
5 Orange	11 Blue / Black	17-25 Tagged numbering
6 Blue	12 Black / White	

3 pin connectors:

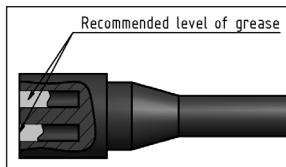
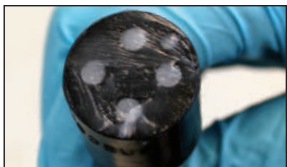
1 Black	2 White	3 Green
---------	---------	---------

Greasing and mating above water (dry mate)



- Connectors must be greased with Molykote 44 Medium before every mating
- A layer of grease corresponding to minimum 1/10 of socket depth should be applied to the female connector
- The inner edge of all sockets should be completely covered, and a thin transparent layer of grease left visible on the face of the connector
- After greasing, fully mate the male and female connector in order to secure optimal distribution of grease on pins and in sockets
- To confirm that grease has been sufficiently applied, de-mate and check for grease on every male pin. Then re-mate the connector

Greasing and mating under water (wet mate)



- Connectors must be greased with Molykote 44 Medium before every mating
- A layer of grease corresponding to approximately 1/3 of socket depth should be applied to the female connector
- All sockets should be completely sealed, and transparent layer of grease left visible on the face of the connector
- After greasing, fully mate the male and female connector and remove any excess grease from the connector joint

Cleaning

- General cleaning and removal of any accumulated sand or mud on a connector should be performed using spray based contact cleaner (isopropyl alcohol)
- New grease must be applied again prior to mating

Scan to access
SubConn® greasing
and cleaning
instruction videos



Bulkhead Connectors

Tightening force

Type	Material	Rec. Torque - Nm
3/8" - 24 UNF	Brass, Aluminium	4,0
	Stainless Steel, Titanium	6,0
	Non-metallic (Peek)	2
7/16" - 20 UNF	Brass, Aluminium	10,0
	Stainless Steel, Titanium	14,0
	Non-metallic (Peek)	4,2
1/2" - 20 UNF	Brass, Aluminium	15,0
	Stainless Steel, Titanium	21,0
	Non-metallic (Peek)	5,2
5/8" - 18 UNF	Brass, Aluminium	29,0
	Stainless Steel, Titanium	41,0
	Non-metallic (Peek)	10,0
3/4" - 16 UNF	Brass, Aluminium	44,0
	Stainless Steel, Titanium	63,0
	Non-metallic (Peek)	15
7/8" - 14 UNF	Brass, Aluminium	60
	Stainless Steel, Titanium	80
	Non-metallic (Peek)	20

Use of Loctite

- Always use Loctite 5910 to lock non-metallic (Peek) connectors
- For locking metallic connectors, the use of Loctite 243 is recommended

For further support and advice, please contact your local SubConn® distributor or MacArtney (www.macartney.com)