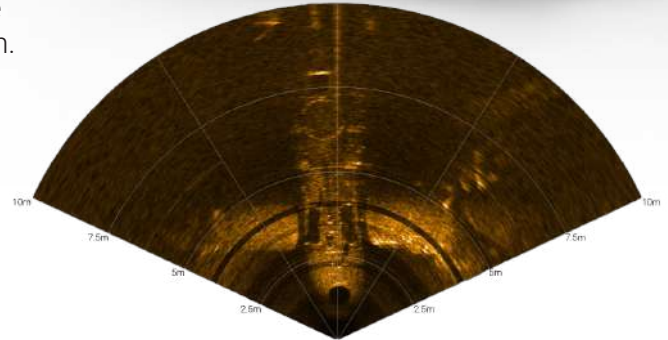


## BluePrint Oculus Sonar

The **Oculus MT series Multibeam Sonars** are a new generation of imaging sonar, designed for use across a wide variety of underwater applications. All the benefits of the Oculus M-Series but with the advantage of a titanium housing to give a depth rating of 1000m.

Their small form factor, weighing less than 400g in water, and dual frequency capabilities make them ideally suited for deployment on micro-sized platforms, while their rugged construction also makes them an excellent choice for subsea infrastructure.



Oculus MT750d



Oculus MT1200d

<b>Frequency</b>	Dual: 750kHz / 1.2MHz
<b>Range</b>	0.1m to 120m / 40m 4mm / 2.5mm res
<b>Update Rate</b>	40Hz
<b>Apertures</b>	130° / 70° horiz 20° / 12° vert
<b>Resolution</b>	512 beams 1° / 0.6° angular res 0.25° / 0.16° beam separation

<b>Frequency</b>	Dual: 1.2MHz / 2.1MHz
<b>Range</b>	0.1m to 30m 2.5mm / 2.5mm res
<b>Update Rate</b>	40Hz
<b>Apertures</b>	130° / 60° horiz 20° / 12° vert
<b>Resolution</b>	512 beams 0.6° / 0.4° angular res 0.25° / 0.16° beam separation